

GSNV February Update

What's In Your Genes?

The Murdoch Childrens Research Institute, Genetic Health Services Victoria, Gene CRC and University of Melbourne Department of Paediatrics are pleased to present ***What's In Your Genes?***, an introductory genetics workshop to be held on Saturday 16th February, 2002 from 10am-2pm. The workshop will cover:

- Introduction to Genetics,
- Mutations & Variation,
- Inheritance Patterns & Family Trees.

This workshop is aimed at people with not much background in genetics who want to understand more. The tutors are very friendly and experienced and very willing to answer your questions.

The registration fee is \$40, which includes lunch and a handbook. For further information, please contact Lydia Gaffney on 8341 6298 or gaffneyl@murdoch.rch.unimelb.edu.au

Privacy Legislation

Attached is a document entitled "Self Help Groups and Privacy: Does the new Privacy Legislation affect self help groups?" written by Sue Nash of the Collective of Self-Help Groups (COSHG), reporting that most self-help groups are not required to comply with the privacy legislation, but outlining how groups may wish to apply the privacy principles to their operations.

Scholarship Alert

If you are interested in receiving the OurCommunity Scholarship Alert once a month by email, please let us know at EilisHughes@murdoch.rch.unimelb.edu.au and we will add you to the mailing list for this – previously we sent it to all financial members, now we will only send it to those who have specifically indicated their interest. This **free** alert outlines all the academic scholarships available from various funding bodies during that month.

Health Self Help or Disability Self Help Grants Workshop

When: 14 February 2002 at 10 am

Where: 22 Pitt Street, Carlton

Cost: \$2.00

Contact: COSHG

Ph: 03 9349 2301

Email: coshg@infoxchange.net.au

This workshop is being held by the Collective of Self Help Groups (COSHG) to support those applying for the DHS Health Self Help or Disability Self Help Grants. **These grants will be advertised in daily papers on Saturday, 9 February 2002.**

Are you still getting this in the mail?

Please help us to protect valuable resources by allowing us to email this monthly bulletin to you. If you would like to receive this by email, please drop us a line at gsnv@murdoch.rch.unimelb.edu.au and we will add you to our email list.

Little Day Out

The Centre for Hormone Research at the RCH is holding a family fun day "Little Day Out" at Horseshoe Bend Farm, Keilor on Saturday 16 March 2002. Gates open from 9.30am until 4pm. A Full Day of Family Fun!

- 2 one-hour shows featuring TV program Playschool's George Spartels & Benita Collings
- Performances by The Jelly Bugs
- Face painting, pony rides, merry go round, jumping castles
- Police and fire department demonstrations

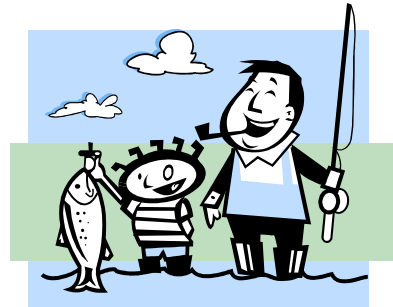
Tickets are on sale now - \$12.00 per person or \$45.00 per family (2 adults and 2 children). Children under 12 are free. Contact Symonne Robinson on (03) 9345-7057 to purchase your tickets.

Summer Picnic Day – Williams Syndrome Family Support Group

The Williams Syndrome Family Support Group are holding their Summer Picnic Day BBQ in Croydon South on Sunday 17 February 2002 from 11.30am onwards. Please telephone Wendy on (03) 5486-8343 if you would like to attend, or if you'd like more information about this group.

Fathers and Sons Group

This group will run over 5 weeks, for young men between the ages of 11 and 17 and their male caregivers. Begins 1 March 2002, at the Alma Road Neighbourhood House. For more information, ring Nick Theophilou on 9572 0984.



Intimate Encounters

'Intimate Encounters' is a landmark photographic essay that explores the myriad of connections between disability and sexuality. It challenges the hidden (and often not so hidden) myth in our society that only the most glamorous, attractive and successful among us lead active, healthy and imaginative sexual lives. It is a myth intoned through images present at every edge of our consciousness. 'Intimate Encounters' creates new visual messages about sexuality and disability. These messages have a basis in the lived realities of individuals with disabilities. This exhibition extends the journey from the subconscious into the community, from the personal to the political, challenging the hidden norms about what is "sexy" and who among us is allowed to feel that way. And the most exciting part is that this exhibition features our very own Caroline Bowditch!

Goya Gallery, 85E Queensbridge Street, Southbank. Wed-Fri 12pm-6pm, Sat-Sun 12pm-5pm until 2 March.

Next GSNV Meeting

The next meeting will be held at 6pm on **Wednesday 20 February**, in the conference rooms in the 10th floor of the Royal Children's Hospital. All members and other interested parties are welcome to attend.

For more information on anything you've read here, please contact Eilís or Caroline in the GSNV office on (03) 8341-6315.